



Hairstylist Guide

CREATED BY STYLISTS, FOR STYLISTS

SIERRA & SAGE
hair extensions

ABOUT US

Sierra and Sage is a company **created by stylists, for stylists** that is devoted to enhancing natural beauty! We are a brand committed to making change in our industry, starting with exceeding quality standards.



important tip:

At Sierra & Sage, we believe in maintaining our quality standards and helping stylists earn more is our top priority. That's why ONLY licensed professionals can purchase our hair and tools. But we've taken it a step further... only approved professional accounts can view our hair, keeping costs a complete secret from the client.

Our products are carefully designed and tested by stylists who work behind the chair full time. Our extension colors are custom-designed by stylists to replicate colors we see clients requesting in the salon every day. We've dealt with the frustration of brands not willing to help when you get a bad batch of hair; that's why we have a 30-day guarantee that is unmatched in the hair extension industry.

At the end of the day, we are hairstylists, like you, with an insane passion for our craft. We are so happy you're here so we can share that passion with you through our products and education.

To, Melissa

Founder & CEO



ABOUT THE HAIR

KEY FACTORS:

1. 100 % Human, Remy Hair
2. European & Asian Sourced
3. Double Drawn
4. Cuticle Aligned
5. No Silicone or Acid
6. Ethically Sourced

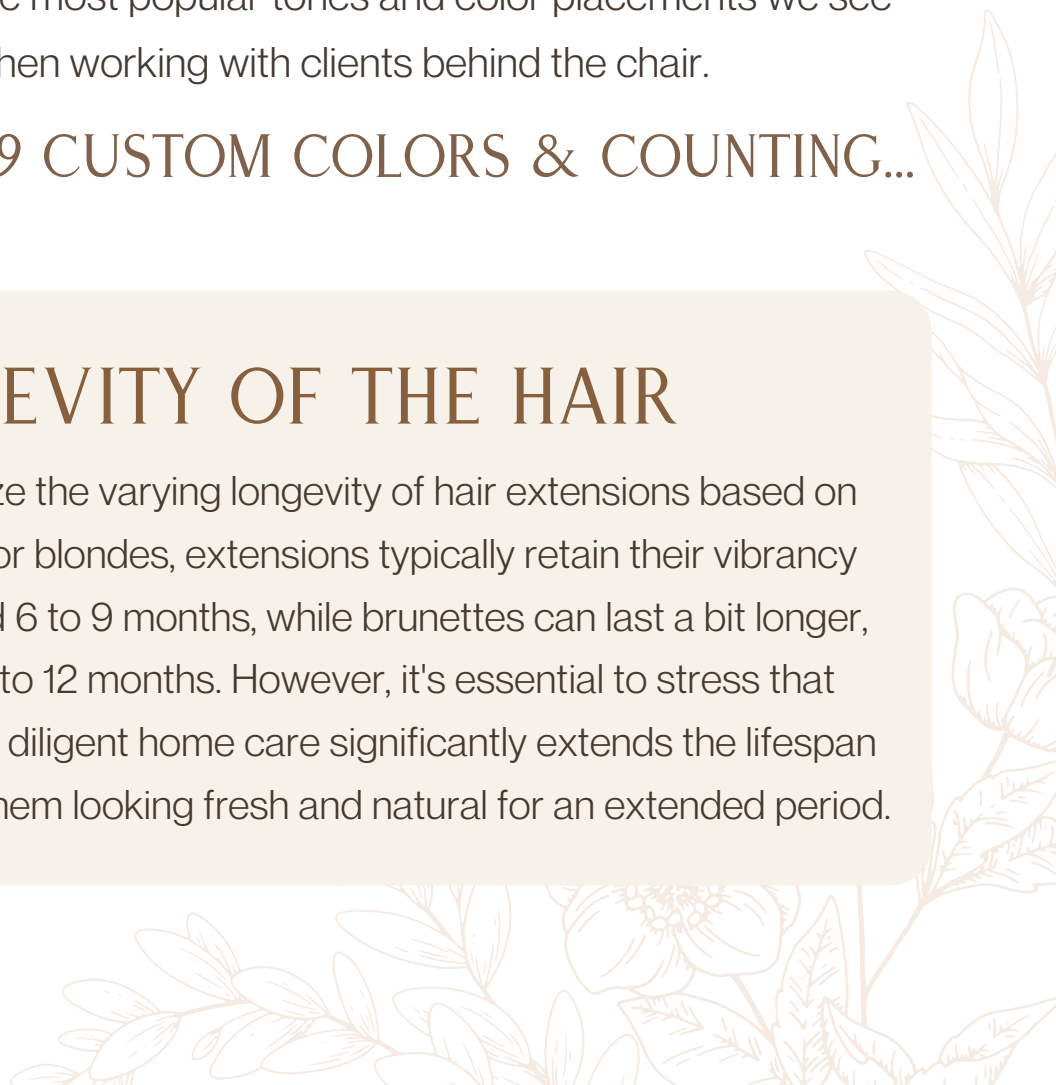
CUSTOM COLOR BLENDS:

Our shades are custom-designed by a team of stylists with over 30 years of experience who work in the salon every day. Our colors are designed to mimic the most popular tones and color placements we see when working with clients behind the chair.

29 CUSTOM COLORS & COUNTING...

LONGEVITY OF THE HAIR

It's crucial to emphasize the varying longevity of hair extensions based on different hair colors. For blondes, extensions typically retain their vibrancy and integrity for around 6 to 9 months, while brunettes can last a bit longer, often ranging from 9 to 12 months. However, it's essential to stress that regardless of hair color, diligent home care significantly extends the lifespan of extensions, keeping them looking fresh and natural for an extended period.



METHODS AVAILABLE IN THE PRO SHOP

SEAMLESS WEFTS:

Seamless Wefts lay flat to the scalp and they are the most seamless/invisible weft option on the market. Our hair is double drawn, 100% human, Remy hair, and is never processed with silicone or acids. Seamless Wefts (aka Genius Wefts or Hybrid Wefts) can be cut anywhere on the seam and do not have a hair return ("mustache").

LENGTHS AVAILABLE:

- 18" LENGTH WITH 55-60 GRAMS
- 22" LENGTH WITH 55-60 GRAMS

AVERAGE NUMBER OF PACKS:

- FINE/THIN DENSITY: 1-2 PACKS MINIMUM
- MEDIUM/AVERAGE DENSITY: 3 PACKS MINIMUM
- THICK DENSITY: 4 PACKS MINIMUM

K-TIPS:

Our Keratin Flat Tips are double drawn, ensuring equal thickness from top to bottom. Keratin Flat Tip hair can be worn for an average of 3 months with proper home care. The hair itself can be re-used if you choose to re-tip each strand, however, we do NOT recommend using the original keratin tip for re-application.

LENGTHS AVAILABLE:

- 18" LENGTH WITH 25 GRAMS (1 GRAM PER BOND)
- 22" LENGTH WITH 25 GRAMS (1 GRAM PER BOND)

AVERAGE NUMBER OF PACKS:

- ADDING DENSITY: 1-3 PACKS OF HAIR
- ADDING LENGTH + DENSITY ON THIN/FINE HAIR: 3-5 PACKS OF HAIR
- ADDING LENGTH + DENSITY TO MEDIUM/THICK HAIR: 5-8 PACKS OF HAIR
- ADDING LENGTH + DENSITY TO VERY THICK HAIR: 8-10 PACKS OF HAIR

TAPE INS:

Our Tape-In extensions offer both seamless integration and remarkable versatility, seamlessly blending into natural hair while providing clients the flexibility to experiment with various styles and looks.

LENGTHS AVAILABLE:

- 20" LENGTH
- 55-60 GRAMS OF 20 PIECES

AVERAGE NUMBER OF PACKS:

- 2-4 BAGS FOR A FULL INSTALLATION OF LENGTH AND THICKNESS.

MICRO BEADS CHEAT SHEET

There's no "one size fits all" beads for hair extensions! Different hair types and textures require different micro bead sizes to prevent premature slipping. Customizing the extension experience for clients and selecting the correct bead size for their hair type and texture makes for a more efficient application & comfortable wear.

1. Shades To Match Your Client:
 - BLONDE
 - LIGHT BROWN
 - BROWN
 - DARK ASH BROWN
 - BLACK
 - BURGUNDY
2. Sizes For Different Hair Types & Textures:
 - 4MM: BEST FOR THIN/FINE
 - 4.5MM: BEST FOR MOST HAIR TYPES
 - 5MM: BEST FOR THICK/COARSE HAIR
3. Our micro beads have silicone lining, making them soft, flexible, and non-damaging, but with a mighty hold. Made of aluminum and copper, they will need to be removed for an MRI/CT as they will be detected on the scan.

